

SCHOOL OF MUSIC



PennState
College of Arts
and Architecture

2024-2025

WELCOME

Dear Friends,

Welcome to the Penn State School of Music! Every day, we collaborate in classrooms, offices, practice rooms, rehearsal spaces, and studios to achieve our shared objectives: excellence in musical performance, insightful research, and genuine camaraderie.



Our degree programs offer thorough preparation in composition, education, music performance, musicology, music theory, and technology. At the School of Music, we design amazing learning experiences for our students. We enable everyone, in every major, to achieve their musical goals.

Our modern facilities and accomplished faculty—which includes internationally recognized artists and scholars—provide exceptional opportunities for learning and development. We demonstrate our dedication to innovation and beauty through our engaging curriculum, collaborative projects, and numerous performance opportunities, such as faculty recitals, student recitals, and guest artist series.

At the Penn State School of Music, we celebrate music's ability to connect, inspire, and enrich lives. We encourage you to attend our events showcasing the remarkable achievements of our students, staff, and faculty. Visit our website and online calendars to learn more about our dynamic musical programming.

WE ARE part of a tradition of musical excellence. WE ARE a community that embraces creativity, diversity, and the pursuit of artistic and academic success. Please join us!

Peace, Love, and Music,

A handwritten signature in blue ink that reads "Ann Marie Stanley".

DR. ANN MARIE STANLEY | DIRECTOR, SCHOOL OF MUSIC

2024-2025 SEASON

2-3 CHOIRS

4 CONCERT BANDS

5 JAZZ

6 NEW MUSIC AT PENN STATE

7 ORCHESTRAS

8 MOSAIC 2024

9 AMERICAN MAVERICKS, MALCONTENTS,
AND MISCHIEF MAKERS RECITAL SERIES

All repertoire is subject to change.

Ensemble Areas and Directors are listed alphabetically.

10-11 RHAPSODY RECITAL
SERIES

12 FACULTY AND GUEST
ARTIST RECITALS

12 STUDENT RECITALS

12 TICKETS

**LOOKING FOR AN
IMPORTANT LINK? VISIT:
linktr.ee/pennstatemusic**



CHOIRS

Saturday, October 26 GLEE CLUB 135th ANNIVERSARY CONCERT

7:30 p.m. Eisenhower Auditorium
This concert will include the current Glee Club and a massed choir of current members and alumni.

FALL 2024

Saturday, October 19

CHORAL COLLAGE

7:30 p.m. Pasquerilla Worship Hall
Parents and Families Weekend. Free admission.

Sunday, November 3

ESSENCE OF JOY

4:00 p.m. Recital Hall

Sunday, November 17

UNIVERSITY CHOIR

1:30 p.m. Recital Hall

Sunday, November 17

ORIANA SINGERS

4:00 p.m. Recital Hall

Sunday, November 17

CONCERT CHOIR

6:30 p.m. Recital Hall

Program to include: "Sacred Place" by Alex Berko, and works by Johannes Brahms, Vivian Fung, Sarah Hopkins, Shara Nova, and more.

Friday, December 13

ESSENCE OF JOY, "Our Gift in Song"

7:30 p.m. Recital Hall





CHOIRS

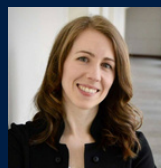
SPRING 2025

Sunday, April 6
UNIVERSITY CHOIR AND
ESSENCE OF JOY
1:30 p.m. Recital Hall

Sunday, April 6
ORIANA SINGERS AND
GLEE CLUB
4:30 p.m. Recital Hall

Wednesday, April 9
Center for the Performing Arts Presents:
CONCERT CHOIR
WITH BANG ON A CAN ALL-STARS
7:30 p.m. Eisenhower Auditorium
Program to include: "before and after nature"
by David Lang

Saturday, April 26
PHILHARMONIC ORCHESTRA
AND CHOIRS
7:30 p.m. Eisenhower Auditorium
Program to include: Symphony No. 9 in D Minor, Op.
125 "Choral" (Beethoven)



DR. KATHRYN HYLTON

Associate Director of Choral Activities
kjh6093@psu.edu



DR. ANTHONY LEACH

Emeritus Professor
alt105@psu.edu



DR. CHRISTOPHER KIVER

Director of Choral Activities
cak27@psu.edu



DR. BRYAN NICHOLS

Associate Professor, Choral Music
bnichols@psu.edu





CONCERT BANDS



DR. MICHQUELENA POTLUNAS FERGUSON

Associate Director of Athletic Bands
mmp213@psu.edu



PROF. ROBERT HICKEY

Assistant Director of Athletic Bands
rlh175@psu.edu



DR. TONYA MITCHELL-SPRADLIN

Director of Wind Band Studies
tmitchellspradlin@psu.edu

FALL 2024

Friday, October 18 CHAMBER ORCHESTRA AND SYMPHONIC WIND ENSEMBLE

7:30 p.m. Recital Hall
*Parents and Families Weekend. Program to include:
Four Pictures from New York (Molinelli) featuring
Luke Kranyak, saxophone, Concerto Competition Winner*

Friday, October 25 CAMPUS BAND AND SYMPHONIC BAND

7:30 p.m. Eisenhower Auditorium

Tuesday, November 19 CAMPUS BAND AND CAMPUS ORCHESTRA

7:30 p.m. Eisenhower Auditorium

Wednesday, December 11 SYMPHONIC WIND ENSEMBLE AND SYMPHONIC BAND

7:30 p.m. Eisenhower Auditorium
*Program to include Re(NEW)al Percussion Quartet
Concerto (Viet Cuong in residence)*

SPRING 2025

Thursday, February 20 SYMPHONIC WIND ENSEMBLE

7:30 p.m. Recital Hall
*Program to include: Symphony No. 2 "Voices"
(Stephenson), Song for Silent Voices (Oquin)*

Thursday, March 6 SYMPHONIC BAND AND CONCERT BAND

7:30 p.m. Eisenhower Auditorium

Thursday, April 17 SYMPHONIC BAND AND SYMPHONIC WIND ENSEMBLE

7:30 p.m. Eisenhower Auditorium
*Program to include: The End of the World (Michael
Schelle, composer-in-residence)*

Tuesday, April 22 CAMPUS BAND AND CONCERT BAND

7:30 p.m. Eisenhower Auditorium





JAZZ

SPRING 2025

Wednesday, March 5
MARDI GRAS WITH CENTRE DIMENSIONS
7:30 p.m. Recital Hall

Friday, April 4 - Saturday, April 5
PENN STATE JAZZ FESTIVAL
All day, Recital Hall
Open to high school participants; registration required.

Wednesday, April 23
INNER DIMENSIONS AND JAZZ COMBOS
7:30 p.m. Recital Hall



DR. JOSHUA DAVIS

Director of Jazz Studies
bass@psu.edu

FALL 2024

Saturday, October 19
DIMENSIONS IN JAZZ

1:30 p.m. Recital Hall

Parents and Families Weekend. Featuring Centre Dimensions, Inner Dimensions, Vocal Dimensions, and more.

Wednesday, November 13
CENTRE DIMENSIONS WITH GILAD HEKSELMAN

7:30 p.m. Recital Hall

Monday, November 18
JAZZ COMBOS

7:30 p.m. Recital Hall

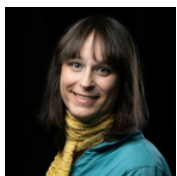
Thursday, December 5
INNER AND VOCAL DIMENSIONS

7:30 p.m. Recital Hall





NEW MUSIC AT PENN STATE



DR. SARAH GENEVIEVE BURGHART RICE

Assistant Professor of Composition and Music Technology
sgbr745@psu.edu



DR. BALJINDER SEKHON

Associate Professor of Composition
bss5477@psu.edu



PROF. KEVIN SIMS

Adjunct Lecturer
kds5820@psu.edu

FALL 2024

Free admission.

PENN STATE COMPOSERS' CONCERTS

Friday, November 8

7:30 p.m. Esber Rehearsal Hall

Friday, December 6

7:30 p.m. Recital Hall

Check the School of Music calendar for Other Arts Ensemble, composition studio recitals, ROARS concerts, and more!

SPRING 2025

Free admission.

PENN STATE COMPOSERS' CONCERTS

Friday, February 21

7:30 p.m. Esber Rehearsal Hall

Friday, March 28

7:30 p.m. Esber Rehearsal Hall

Friday, April 15

7:30 p.m. Recital Hall

Thursday, March 20 - Saturday, March 22

INTERNATIONAL NEW-MUSIC FESTIVAL AND SYMPOSIUM

Esber Rehearsal Hall and Recital Hall

The Penn State School of Music will host the 3rd Biennial International New-Music Festival and Symposium March 20-22, 2025. The festival will consist of multiple concerts and research presentation sessions, featuring the work of composers and scholars selected through an international call for scores and research proposals.

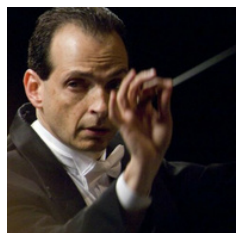
AFRICAN AMERICAN MUSIC FESTIVAL

Wednesday, February 5 - Saturday, February 8

Mark your calendars for the Penn State School of Music's African American Music Festival, taking place February 5-8, 2025. This year's theme, "Spirituals and the Blues," promises to be a soul-stirring celebration of African American musical heritage. Stay tuned for details on this exciting line-up featuring Essence of Joy and an array of distinguished guest performers.



ORCHESTRAS



PROF. GERARDO EDELSTEIN
Director of Orchestral Studies
gfe1@psu.edu

FALL 2024

Sunday, September 29
CHAMBER ORCHESTRA
4:00 p.m. Recital Hall

Tuesday, October 8
PHILHARMONIC ORCHESTRA
7:30 p.m. Eisenhower Auditorium
Program to include: Preludio Sinfónico (Puccini); Piano Concerto No. 1 (Tchaikovsky) featuring Concerto Competition Winner Ian Smith; La Noche de Los Mays (Revueltas)

Friday, October 18
CHAMBER ORCHESTRA AND SYMPHONIC WIND ENSEMBLE
7:30 p.m. Recital Hall
Parents and Families Weekend

Tuesday, November 19
CAMPUS BAND AND CAMPUS ORCHESTRA
7:30 p.m. Eisenhower Auditorium

Thursday, November 21
PHILHARMONIC ORCHESTRA
7:30 p.m. Eisenhower Auditorium
Program to include Symphony No. 7 in E Major (Bruckner)

SPRING 2025

Monday, February 10
EARLY MUSIC ENSEMBLE
7:30 p.m. Recital Hall

Monday, March 3
PHILHARMONIC ORCHESTRA
7:30 p.m. Eisenhower Auditorium
Program to include: Prelude and Liebestod from Tristan and Isolde (Wagner), The Firebird Suite (Stravinsky)

Monday, March 31
EARLY MUSIC ENSEMBLE
7:30 p.m. Recital Hall

Saturday, April 26
PHILHARMONIC ORCHESTRA AND CHOIRS
7:30 p.m. Eisenhower Auditorium
Program to include: Symphony No. 9 in D Minor, Op. 125 "Choral" (Beethoven)

Sunday, April 27
CAMPUS ORCHESTRA
7:30 p.m. Eisenhower Auditorium



MOSAIC 2024



Join us at Eisenhower Auditorium for ***Mosaic***, the Penn State School of Music's acclaimed student showcase. This annual event highlights the incredible talent of our top ensembles and soloists, creating a mesmerizing concert experience like no other.

Eisenhower Auditorium's special lighting effects seamlessly connect performances from the stage to the grand tier and balcony, enveloping the audience in a dynamic musical journey. With applause reserved for intermission and the grand finale, *Mosaic* offers a fast-paced and captivating program, constantly surprising the audience as performances move throughout the venue.

Organized by the ensemble area of the School of Music, *Mosaic* is made possible with the support of our dedicated faculty and the skilled technical staff at Eisenhower Auditorium. Talented student soloists and small ensembles, chosen through auditions held in October, have the honor of performing in this unforgettable concert. Don't miss out on this exhilarating showcase of musical artistry!

DECEMBER 8,
2024

4:00 p.m.
EISENHOWER
AUDITORIUM

ADULTS | \$33
STUDENTS | \$10



AMERICAN MAVERICKS, MALCONTENTS, AND MISCHIEF MAKERS

a recital series presented by the
Penn State School of Music

OCTOBER 15, 7:30 P.M.
NOVEMBER 12, 7:30 P.M.
FEBRUARY 18, 7:30 P.M.

\$30 GENERAL ADMISSION, FREE FOR STUDENTS

ticket includes cocktails, light refreshments,
and conversation beginning at 6:30 p.m.
before each recital



Join us for an exhilarating recital series, "**American Mavericks, Malcontents, and Mischief Makers**," featuring the exceptional talent of our School of Music faculty and students. This captivating series celebrates the bold and rebellious spirit of music, highlighting groundbreaking composers and performers who dared to defy conventions. Immerse yourself in a diverse array of innovative and provocative works in our intimate recital hall. Each recital incorporates curated remarks delivered by our stellar musicology and theory faculty.

\$30 General Admission

Ticket includes cocktails, light refreshments, and conversation beginning at 6:30 p.m. before each concert. Free Admission (concert only) will be offered to students with a valid student ID at the door starting at 6:30 p.m. prior to each concert.

RHAPSODY RECITAL SERIES

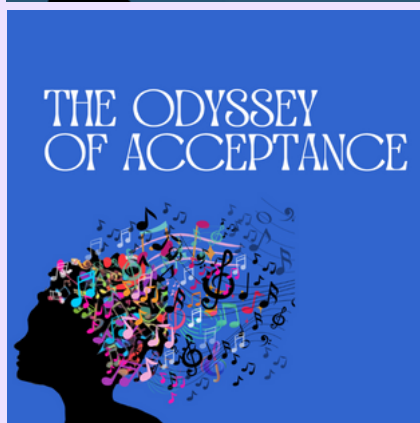
The School of Music faculty present their annual **Rhapsody Series**, a curated recital series of hour-long concerts presented without intermission.

Rhapsody Series recitals will take place on select Sundays in the Recital Hall at 4:00 p.m.
FREE ADMISSION!



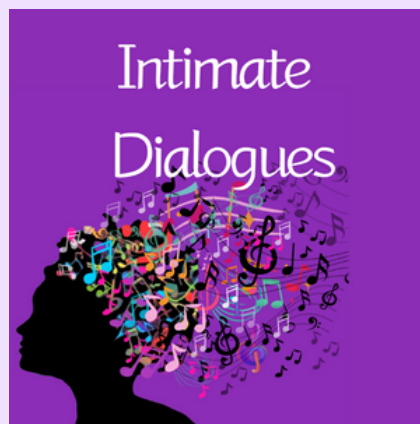
SEPTEMBER 8: THEN AND NOW

The School of Music voice area faculty, including Rachel Copeland, Ted Christopher, Norman Spivey, Dawn Pierce, and Parker Konkle, will perform pieces that were significant early in their careers and new works that are currently inspiring them.



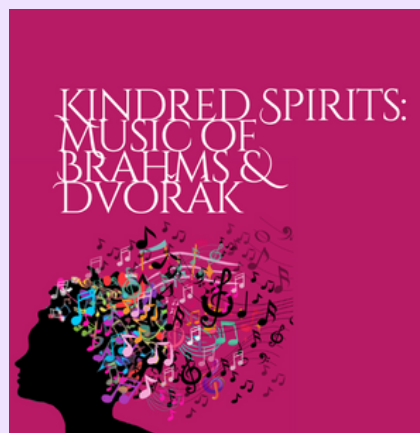
SEPTEMBER 22: THE ODYSSEY OF ACCEPTANCE

The renowned saxophone chamber ensemble, the CAPITOL QUARTET, presents a broad historical program exploring the saxophone's journey from contraption to artistry. The performance will include the first-ever composition for saxophone quartet, transcriptions from traditional chamber repertoire, recent commissions and premieres, and jazz.



OCTOBER 20: INTIMATE DIALOGUES

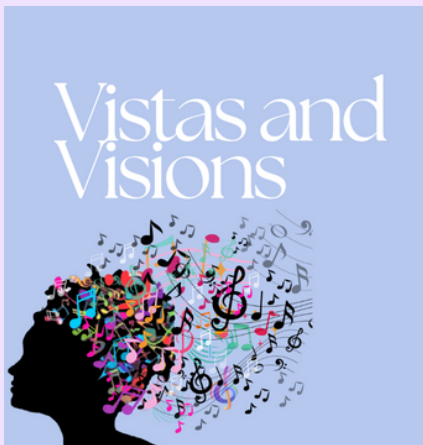
Rachel Copeland (soprano), Tim Deighton (viola), and Ann Deighton (piano) explore a range of emotions through songs pairing voice with obligato string instrument. The program features transcriptions of songs by Massenet and Strauss, and original settings by Loeffler and Brahms.



NOVEMBER 10: KINDRED SPIRITS: MUSIC OF BRAHMS & DVOŘÁK

Max Zorin, joined by the New York-based OneMusic International Ensemble, presents an evening celebrating the friendship of 19th-century masters. The program features Dvořák's Piano Quintet in A Major, Op. 81, and Brahms' Scherzo from the FAE Sonata for violin and piano.

RHAPSODY RECITAL SERIES



FEBRUARY 9: VISTAS AND VISIONS

Horn professor Sarah Schouten presents music centered on painting pictures through sound, featuring works by Daniel Baldwin, Justinian Tamusuza, James Naigus, and Gina Gillie.



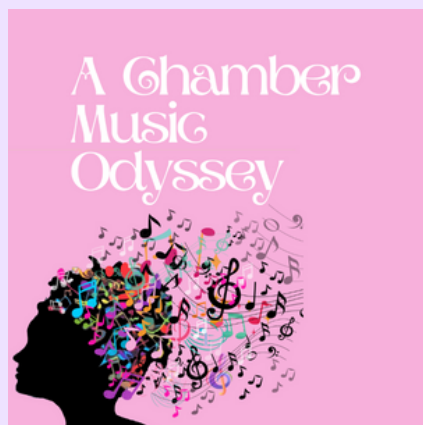
FEBRUARY 16: MATCH POINT

Dr. Margaret P. Fay, Dr. Timothy Shafer, and Dr. Graham Mackenzie present a program of sports-inspired music, including works by Lisa Neher, Alexander Tcherepnin, João Guilherme Ripper, Mason Bynes, and the world premiere of Dr. Fay's *Match Point*.



FEBRUARY 23: FOLK INSPIRATIONS

Professors James Lyon and Anthony J. Costa curate an afternoon of chamber music for clarinet and strings, featuring works inspired by folk music from around the globe, including pieces by Jungyoon Wie and Samuel Coleridge-Taylor.



MARCH 2: A CHAMBER MUSIC ODYSSEY

features Naomi Seidman, Andreas Oeste, Tim Deighton, Patricia Weitzel, and Melody Quah presenting a journey through innovative compositions.

FACULTY AND GUEST ARTIST RECITALS

Discover the best-kept secret on campus at the School of Music! We invite you to attend our free faculty and guest artist recitals throughout the school year. Experience world-renowned musicians and scholars performing in our intimate recital hall, offering a unique opportunity to enjoy exceptional music up close. Don't miss these incredible performances that showcase the extraordinary talent and passion of our faculty and visiting artists.

Visit arts.psu.edu/events

or scan the QR code for a complete listing of all performances:



STUDENT RECITALS

Experience the stars of tomorrow on the stage today at our School of Music student recitals, happening all semester long and completely free! Witness the remarkable talent and dedication of our students as they perform diverse repertoire in solo, chamber, and like-instrument ensembles throughout the semester. These recitals offer a unique opportunity to support and enjoy the artistry of our emerging musicians.

Visit arts.psu.edu/events

or scan the QR code for a complete listing of all performances:



TICKETS

The School of Music hosts more than 400 open-to-the-public performances each year, and you are invited to join us! While most of our performances have free admission, tickets for those requiring them can be purchased at <https://am.ticketmaster.com/psuarts/buy?id=MzIz> or via the QR code:



WANT TO MAKE MUSIC WITH US?

APPLY TO THE
SCHOOL OF MUSIC:



ENSEMBLE
AUDITIONS:





This publication is available in alternative media on request.

Penn State is an equal opportunity, affirmative action employer, and is committed to providing employment opportunities to all qualified applicants without regard to race, color, religion, age, sex, sexual orientation, gender identity, national origin, disability or protected veteran status. UBR ARC 24-163